

PREFORMED™ Splice



For Copper Conductor
Right Hand Lay Standard



Part Number	Conductor Stranding	Conductor Diameter (mm)	Colour Code
CFS-038	7/1.25	3.75	Green
CFS-043	3/2.00	4.30	Yellow
CFS-048	7/1.63	4.80	Black
CFS-053	7/1.75	5.25	Purple
CFS-060	7/2.00	6.00	Yellow
CFS-066	7/2.21	6.60	Brown
CFS-075	7/2.50	7.50	Blue
CFS-083	7/2.75	8.25	White
CFS-088	19/1.75	8.75	Purple
CFS-096	7/3.25	9.60	Orange
CFS-100	19/2.00	10.00	Yellow
CFS-105	7/3.50	10.50	Purple
CFS-113	7/3.75	11.30	Black
CFS-117	19/2.34	11.68	Brown
CFS-123	37/1.25	12.25	Purple
CFS-125	19/2.56 37/1.75	12.80 12.25	Purple
CFS-138	19/2.75	13.75	White
CFS-150	19/3.00	15.00	Red
CFS-158	37/2.25	15.75	Brown
CFS-175	37/2.50	17.50	Blue
CFS-183	37/2.62	18.31	Blue
CFS-193	37/2.75	19.25	White
CFS-210	37/3.00	21.00	Red
CFS-235	37/3.35	23.47	Orange

Note: Cad copper conductors are left hand lay and require LHL splices. Contact PLP for further information and other available sizes.



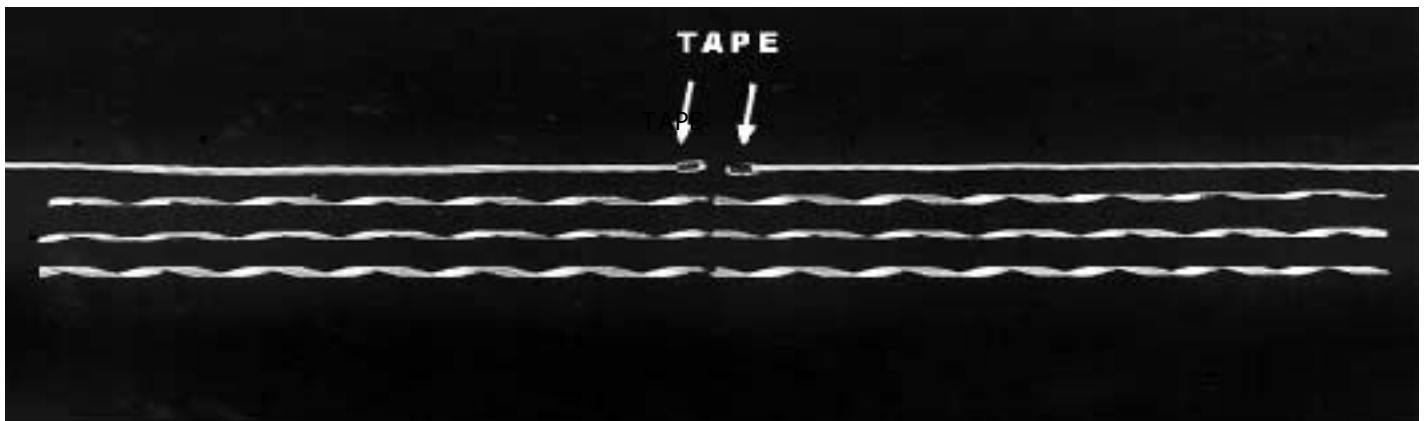
Application Procedure & Safety Considerations

P R E F O R M E D L I N E P R O D U C T S

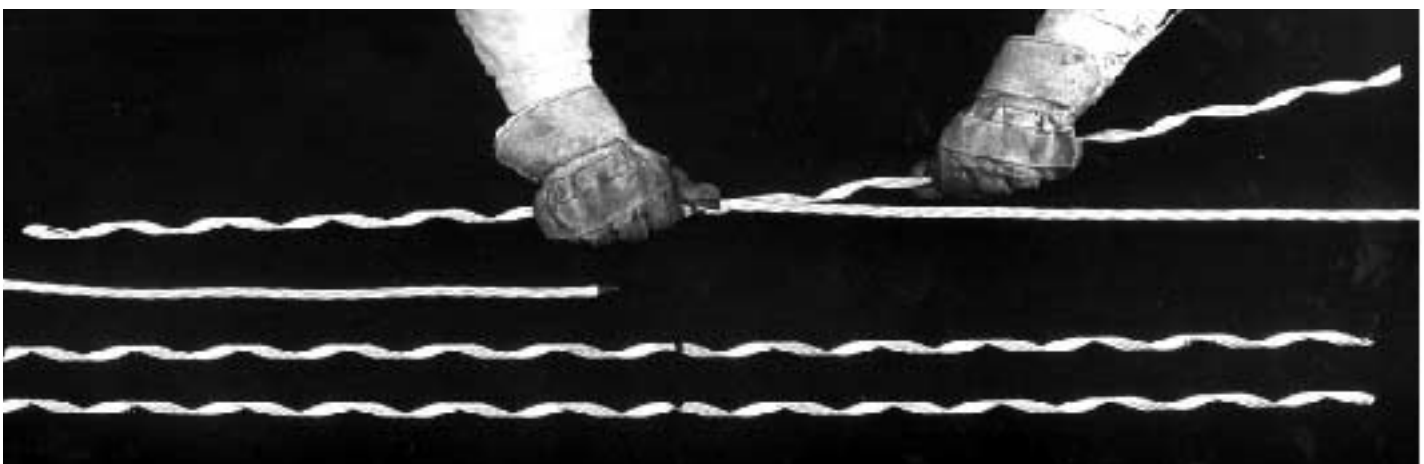
Conductor Splice

Completely read and understand this procedure before applying products. Special attention should be given to the Safety Considerations located on the last page. We advise the reader to review those considerations now, and then again during the general review of this procedure

Hand Application of Splice on Conductor.

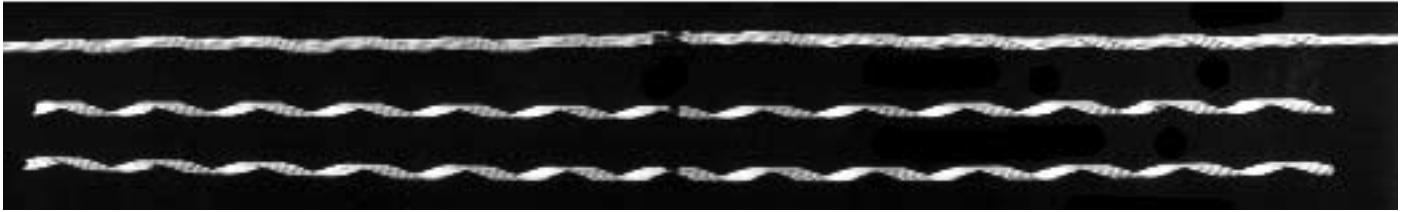


1) Illustration of splice as received in the field. Tape Aluminium Conductor ends with one layer of vinyl tape to prevent ends from flaring.

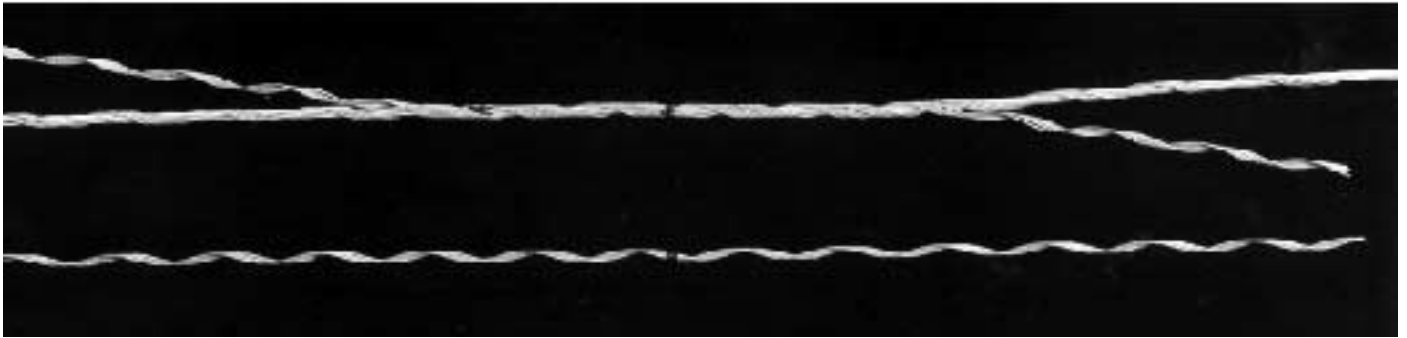


2) Conductor should be thoroughly wire brushed until bright and clean. A quality inhibitor must be applied to retard oxidation. Place one taped conductor end at the centre mark of one of the subsets. (NOTE: If each subset does not have the same quantity of rods, start with one containing the greatest number of rods.) Hold it securely with thumb and finger pressure and apply by wrapping the subset around the conductor.





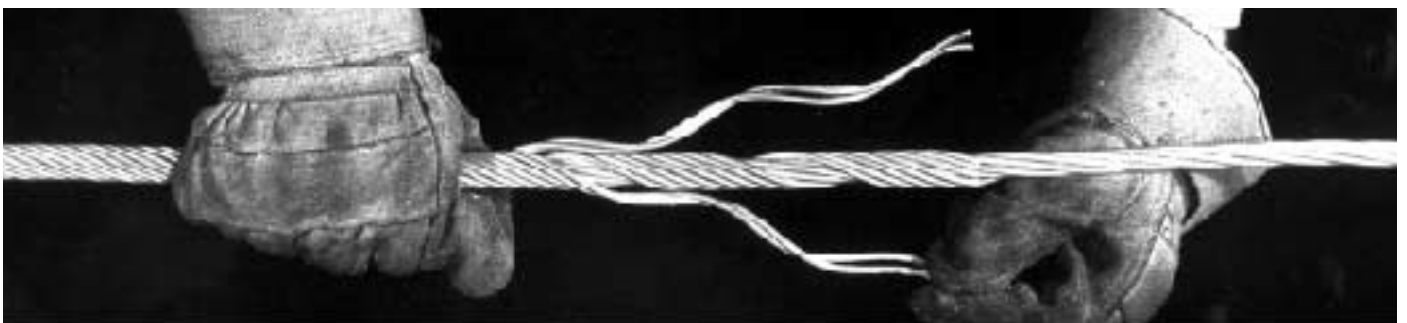
3) Position the other taped conductor end so that both ends are approximately 2 mm apart. Hold it securely and wrap on the subset completely.



4) Match the centre mark of the first subset and apply the second subset one or two pitch lengths on each side of centre.



5) Apply the third subset in the same manner, then wrap on both subsets simultaneously, to within one or two pitch length of completion.

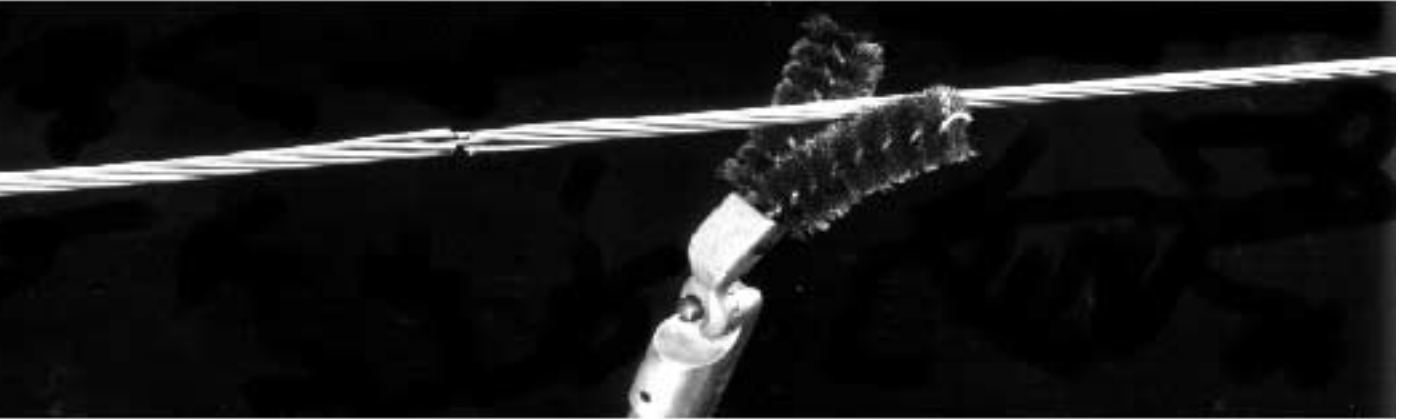


6) For an easy and distortion free application, split the subset as shown. Wrap each split end around the conductor separately, and apply thumb pressure till it snaps into place.



7) Splice completely applied

Hot Stick Application of Splice on Damaged Conductor



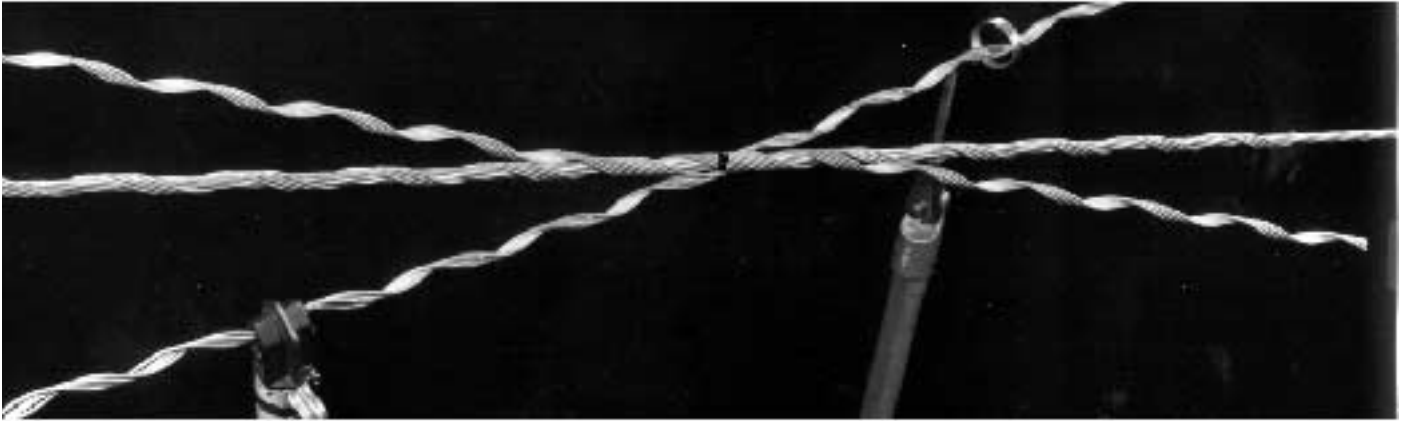
- 1) Prepare conductor by thoroughly wire brushing entire splice area until bright and clean. A quality inhibitor must be applied to retard oxidation. If damaged conductor ends are flared out, they must be unwrapped two pitch lengths and the flared ends severed with hotline cutters. Care should be taken not to distort the lay of the strands. The strands must then be wrapped back into their original positions before the splice can be applied.



- 2) Position the centre mark of one of the subsets at the centre of the damaged conductor as shown. (Refer to 'NOTE' in paragraph two of Hand Application Procedure.) Wrap on completely with the aid of an Applicator Ring.



- 3) Place the second subset in the hold stick, making sure that the centre marks match and that the subsets are seated tightly against each other.



4) When the second subset has been applied one pitch length each way from the centre, apply the third subset in the same manner.



5) After the second and third subsets have been started, move the hold stick to a convenient location to steady the conductor. Then wrap on the second and third subsets consecutively, one or two pitches at a time.



6) Snap the end of the splice into place with the Applicator Ring.



7) Splice completely applied. The ends of the splice rods can be snapped in easily by flexing the conductor and rotating the subset with thumb pressure until the rod ends snap into position.

GENERAL NOTES

- 1) To assure a reliable electrical connection, all conductors, new or weathered, must be thoroughly scratch brushed until bright and clean immediately prior to installation.
- 2) A quality inhibitor must be applied to retard oxidation.
- 3) Tapping over a PREFORMED conductor splice is permissible. Whenever a tapping clamp will be installed over a splice, the outer surface of the splice should be thoroughly scratch brushed to remove any oxides and glue which may be present. Inhibitor should then be applied to the area beneath the tap itself.
- 4) PREFORMED Splices must not be re-applied after initial installation.
- 5) PREFORMED Splices may be used at the support point but only after factory consultation.
- 6) PREFORMED Splices are precision devices which should be handled carefully to prevent distortion and damage.
- 7) PREFORMED Splices should be stored in cartons under cover, preferably shelf storage.

SAFETY CONSIDERATIONS

- 1) For proper performance and personal safety be sure to select the proper size PREFORMED Splice before application.
- 2) Some inhibitors when in contact with rubber protective equipment can reduce its dielectric strength and cause deterioration of the rubber. Please follow your company's safety procedures when this situation is encountered.
- 3) PREFORMED Splices are precision devices. To ensure tight assembly, they should be stored in cartons under cover and handled carefully.
- 4) This application procedure is not intended to supersede any company construction or safety standards. This procedure is offered only to illustrate safe application for the individual. Failure to follow these procedures and restrictions may result in personal injury.
- 5) When working in the area of energized lines, extra care should be taken to prevent accidental electrical contact.
- 6) This product is intended for use by trained linesmen only. This product should not be used by any one who is not familiar with and trained in the use of it.

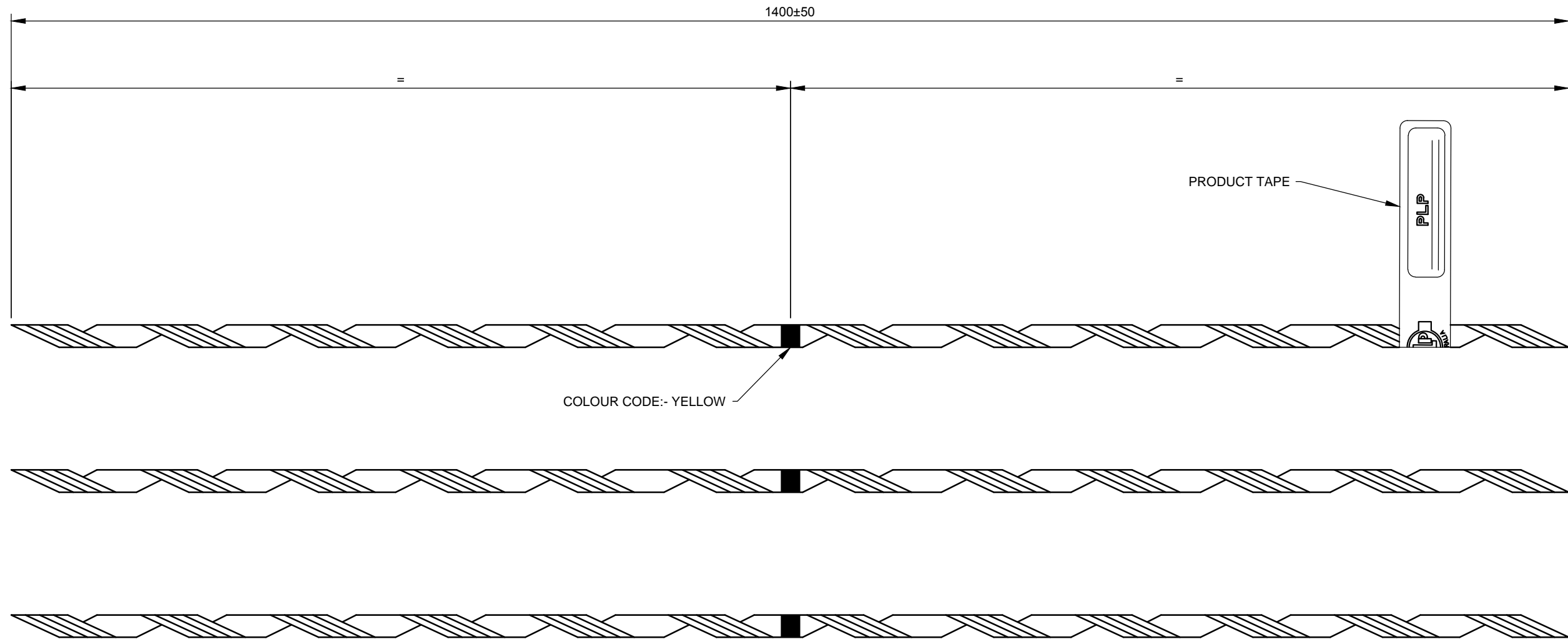


**PREFORMED
LINE PRODUCTS
(AUSTRALIA) PTY LTD**
A.B.N. 27 004 533 877

190 Power st. Glendenning, NSW Australia 2761
PO Box 106, Glendenning Business Centre, NSW Australia 2761
Phone: (02) 8805 0000 Fax: (02) 8805 0090
intl 61 2 8805 0000 intl 61 2 8805 0090
Email: plpaus@preformed.com.au
Web: www.preformed.com.au

NOTES:-

1. MATERIAL:- COPPER ALLOY
2. IDENTIFICATION MARKINGS:- SEE PRODUCT TAPE
3. LAY:- RIGHT HAND LAY - CFS-100
LEFT HAND LAY - CFS-100-L
4. No. OF SETS:- 3
5. TOTAL No. OF RODS:- 12
6. WIRE DIAMETER:- Ø2.80mm
7. END FINISH:- CHAMFER



CFS-100:- PRODUCT TAPE COLOUR:- YELLOW

7/3.50, 19/2.00, 19/2.11, 19/2.14 COPPER		COPPER SPLICE
COLOUR: YELLOW		PART No: CFS-100
QTY: XX		W/O ___ MM/YY

CFS-100-L:- PRODUCT TAPE COLOUR:- YELLOW

7/3.50, 19/2.00, 19/2.11, 19/2.14 COPPER		COPPER SPLICE
COLOUR: YELLOW		PART No: CFS-100-L
QTY: XX		W/O ___ MM/YY

E	25/06/2015	KR	NA	FP	D2558	ADDED LHL VERSION 'CFS-100-L'
D	17/06/2014	NA	PT	DF	D1977	CHANGE PRODUCT TO MATCH CFG-100-CL DESIGN
REV	REV DATE	DRWN	APVD	APVD	REVISION ERF NUMBER	DESCRIPTION



PREFORMED LINE PRODUCTS
The connection you can count on.

(PLP AUSTRALIA)

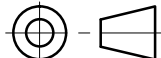
CUSTOMER DRAWING TITLE

COPPER SPLICE

TO SUIT 7/3.50, 19/2.00, 19/2.11, 19/2.14 COPPER CONDUCTOR

TOLERANCES UNLESS NOTED
HOLE DIA: ±0.5mm
LINEAR DIMS:
≤30mm: ±1.5mm
>30mm: ±5% UP TO 5mm MAX.
ANGLES: ±2°

UNITS
mm
DO NOT SCALE
THIRD ANGLE PROJECTION



CONFIDENTIAL THIS DRAWING IS THE EXCLUSIVE PROPERTY OF PREFORMED LINE PRODUCTS COMPANY AND IS TO BE USED ONLY WITH THE PRIOR EXPRESSED PERMISSION OF PLP					
DRWN: CW	DATE: 06/05/1991	PLP CATALOGUE NUMBER -	PLP PART NUMBER CFS-100##		
APVD: DM	DATE: 07/05/1991	CUSTOMER I.D. NUMBER -	PLP DRAWING NUMBER 078007-CD		
APVD: -	DATE: -	SCALE N.T.S.	SHEET No. 1 OF 1	PLP ORIG ERF NUMBER 7139	REV E

PLP (AUSTRALIA) PTY LTD
ENGINEERING DEPARTMENT

DATE – 17th June 2014

TYPE TEST REPORT NO: T9426
TEST REFERENCE NO: T14/49
PAGE 1 of 5

MECHANICAL STRENGTH TYPE TEST

ON:

COPPER COPPER GRIP AND COPPER SPLICE
19/2.14 HDC CONDUCTOR

(PLP Aust. Part Nos. – CFG-100-CL & CFS-100)

Testing Officer:  (Jose-elmer Simeon)

Approved by:  (Florian de Celis, Compliance Manager)

Date Approved:  _____

190 Power Street Glendenning NSW 2761 AUSTRALIA
Phone: 8805 0000, INTL (612) 88050000
Fax: 8805 0090, INTL (612) 88050090

THE QUALITY SYSTEM OF PLP AUSTRALIA HAS BEEN CERTIFIED TO
AS/NZS ISO9001:2008 BY GLOBAL MARK REGISTER QUALITY ASSURANCE

Fittings and Accessories for Power and Communication.
Engineered Plastics and Extrusions.
Data Communication Products.