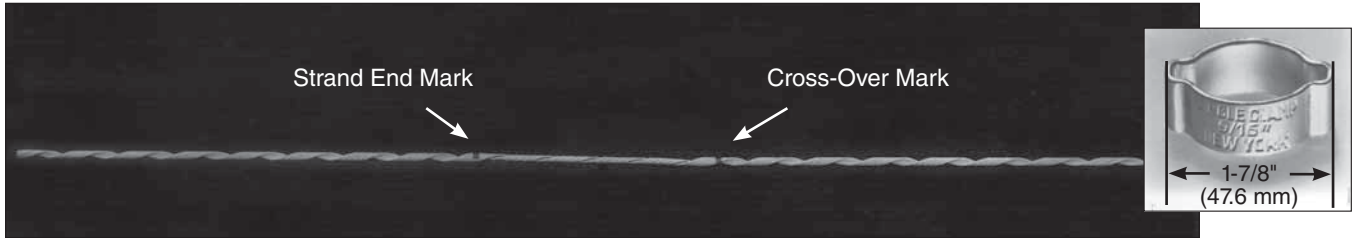




WRAP GUY LINK

Be sure to read and completely understand this procedure before applying product. Be sure to select the proper PREFORMED™ product before application.



PREFORMED Wrap Guy Link as delivered to you.

Step #1 Loop strand around pole. Start application of the PREFORMED™ Wrap Guy Link at upper strand-end mark and apply 8" to 10".



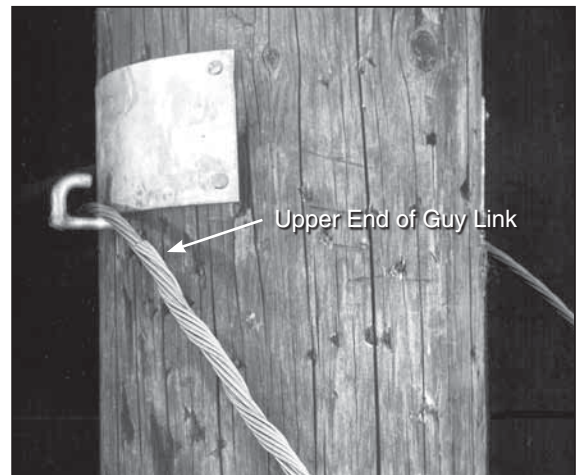
Step #3 Complete application of upper leg. Rotate the leg away from the strand to prevent distortion.



Step #2 Crimp circle clamp 1" above end of strand.



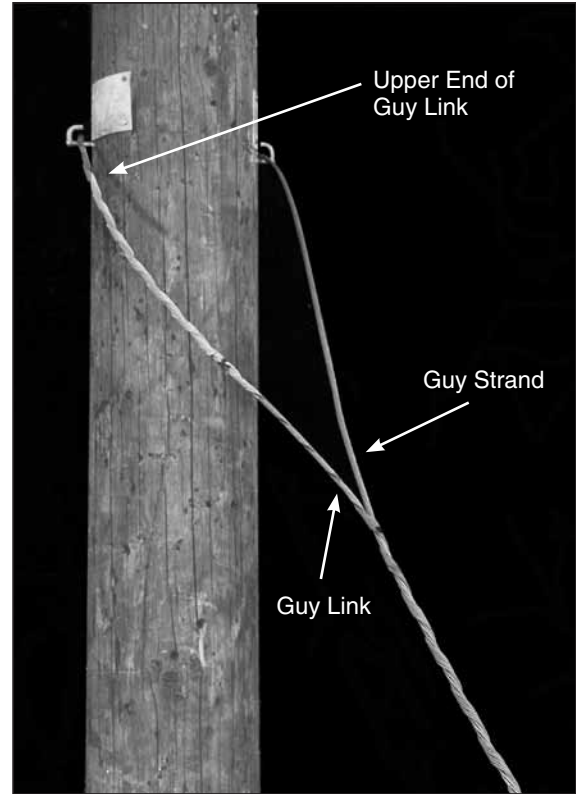
Step #4 Upper end of Wrap Guy Link should be placed one hand width away from pole.



Step #5 Start application of lower leg at crossover mark and complete application.



Step #6 Completed application of PREFORMED™ Wrap Guy Link.



Pole line hardware, other than illustrated, may be used. However, the steps to be followed in the actual application as outlined, must be carefully adhered to.

SAFETY CONSIDERATIONS

This application procedure is not intended to supersede any company construction or safety standards. This procedure is offered only to illustrate safe application for the individual. **FAILURE TO FOLLOW THESE PROCEDURES MAY RESULT IN PERSONAL INJURY OR DEATH.**

Do not modify this product under any circumstances.

This product is intended for use by trained technicians only. **This product should not be used by anyone who is not familiar with, and not trained to use it.**

When working in the area of energized lines, extra care should be taken to prevent accidental electrical contact.

For proper performance and personal safety, be sure to select the proper size PREFORMED™ product before application.

PREFORMED products are precision devices. To insure proper performance, they should be stored in cartons under cover and handled carefully.



PREFORMED LINE PRODUCTS

P.O. Box 91129, Cleveland, Ohio 44101 • 440.461.5200 • www.preformed.com • e-mail: inquiries@preformed.com
SP2030-1