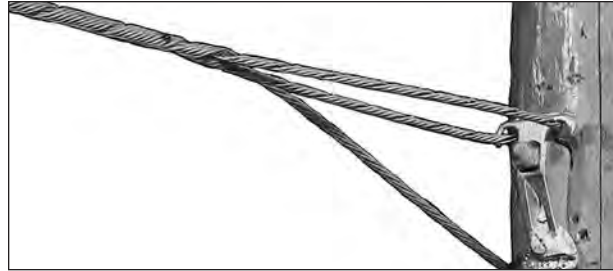


False Dead-end

False Dead-ends

PREFORMED False Dead-ends are a fast, safe, and economical method for false dead-ending strand. They are designed to be easily applied without any special tools, and because False Dead-ends are made from the same material as the strand, they will hold the same published rated breaking strength.



Galvanized Steel, C-Coat for use on Extra High Strength or Utility Grade Strands

Catalog Number	Strand 7-Wire	Mean Diameter	Length	Color Code	Units Per Carton	Wt./Lbs. Per Carton
GFDE-2121	¼"	.240"	36"	Yellow	25	17
GFDE-2123	5/16"	.327"	39"	Black	25	24
GFDE-2124	3/8"	.360"	42"	Orange	25	30
GFDE-2125	7/16"	.435"	48"	Green	25	52
GFDE-2126	1/2"	.495"	50"	Blue	25	71

Note: Left Hand Lay Standard.

For use on Bezinal® Strand

Catalog Number	Strand 7-Wire	Mean Diameter	Length	Color Code	Units Per Carton	Wt./Lbs. Per Carton
BFDE-9121	¼"	.240"	36"	Yellow	25	17
BFDE-9123	5/16"	.327"	39"	Black	25	24
BFDE-9124	3/8"	.360"	42"	Orange	25	30
BFDE-9125	7/16"	.435"	48"	Green	25	52
BFDE-9126	1/2"	.495"	50"	Blue	25	71

Note: Left Hand Lay Standard.

Manufactured from Bezinal® Material. Bezinal is a registered trademark of the Bekaert Corporation