



FIBERLIGN®

Fiber Network Solutions
for Power Utilities – ADSS

Asia Pacific Region

The connection you can count on

FIBERLIGN® Product Solutions



As energy grids become more distributed and complex, All Dielectric Self Supporting (ADSS) fibre optic cable will play an increasing critical role in controlling, monitoring and protecting these essential connections to provide a stronger and more reliable network.

PLP provides precision-engineered solutions and is trusted by energy and communication providers worldwide. With locations in more than 20 countries, PLP delivers high-quality products and unparalleled services from our global subsidiaries to our customers.

FIBERLIGN® ADSS Product Range

FIBERLIGN® ADSS Dead Ends



The FIBERLIGN® Dielectric Dead-end has been designed to terminate ADSS aerial fibre optic cable securely and gently. The two-component design consists of structural reinforcing rods and a dead-end component to transfer tensile loads and distribute radial compressive forces without damaging the fragile, internal optical fibres.

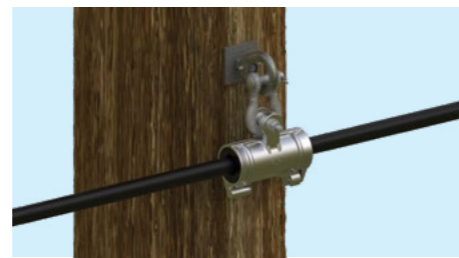
A Lite Dead-end option is also available for short low-tension applications where a two-component design is not necessary.

FIBERLIGN® Download Cushion



The FIBERLIGN® Download Cushion secures both the ADSS cable downloads to the structure, while minimising the compression force from the clamp that could be transferred to the optical elements.

FIBERLIGN® ADSS Suspension Clamps



The FIBERLIGN® Dielectric Suspension Clamp is specifically designed for installation on ADSS cables. Cushion inserts gently grip the ADSS cable and provide moderate slip strength without damaging the cable jacket.

The clamps are available in short span for spans up to 200m, medium span for spans up to 350m and long span for spans up to 600m.

FIBERLIGN® ADSS Motion Control



ADSS cables tend to vibrate at higher levels due to their light weight, compared to other cables of the same size. The FIBERLIGN® Spiral Vibration Damper reduces levels of Aeolian vibration on ADSS cables without the need to calculate precise positioning.

FIBERLIGN® Pole Hardware



PLP offers an extensive range of pole hardware and fittings for ADSS to attach PLP FIBERLIGN® dead-ends, suspension systems and download cushions onto timber, concrete and metal poles as well as the full range of lattice towers.

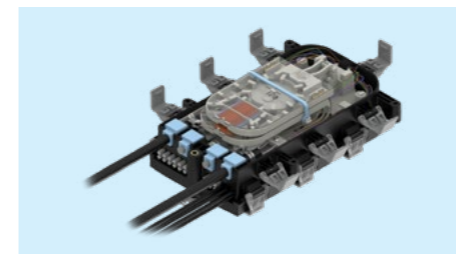
FIBERLIGN® Cable Storage Bracket



The FIBERLIGN® Cable Storage Bracket is designed to store excess ADSS or underground fibre optic cable onto timber, concrete and metal poles as well as the full range of lattice towers.

Excess cable can be utilised for future loop joints or T-offs. Two sizes are available to allow for the minimum bend radius to suit specific applications.

COYOTE® STP Closures

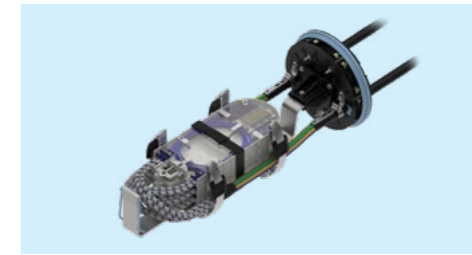


The COYOTE® STP (Splice Termination Platform) family of closures are a small-scale, cost-effective range that provides greater application flexibility than traditional splice and distribution devices.

The robust latch system and the integrated molded cover allows for quick re-entry and creates a secure seal over a wide range of cable profiles.

The COYOTE® STP closure is suitable for a variety of applications including ADSS utility networks, FTTH (Fibre to the Home) and mobile network operators to small premises.

COYOTE® Dome Closures



The COYOTE® Dome Closure range incorporates PLP's patented segmented end plate system that enables access to each cable port without disrupting the surrounding cables. The Dome Closure is rated to IP68.

Combined with the flexible grommet system, these closures are quick and simple to assemble with no special tools or heat guns required.

FibreGuard™ Splice Closures



The FibreGuard™ range of closures have been designed to suit all types of cables including ADSS, OPGW and underground, providing users with flexibility and reliability.

The FibreGuard™ closure will accommodate fusion, mechanical and ribbon splicing and can be used in a variety of installation applications including buried underground, manholes, wooden or concrete poles, aerial strand, and towers.

Reliability

PLP is committed to providing quality, reliable and durable products. We test all our products during the development stage in our research laboratory and all our manufacturing facilities to ensure our quality is never compromised.

Customer Support

PLP's customer support staff act promptly to keep lead times to a minimum. PLP provides technical and on-site product support.

PLP Global

PLP's global subsidiaries and our efficient product supply chain ensures products move from origin to installation without delay.

PLP Asia Pacific Regional Office Locations

PLP Australia

190 Power Street
Glendenning NSW 2761
Australia
Ph: +61 2 8805 0000
Fax: +61 2 8805 0090
Email: sales@preformed.com.au
www.plp.com/au

PLP New Zealand

35 Lady Ruby Drive
East Tamaki, Manukau, Auckland 2013
New Zealand
Ph: +64 9 274 2000
Fax: +64 9 274 2001
Email: mail@preformed.co.nz
www.preformed.co.nz

PLP Vietnam

No. 9A, Street 53, Zone 5
Tan Phong Ward
District 7, Ho Chi Minh City
Vietnam
Ph: +84 28 3939 3927
Fax: +84 28 3824 3929
Email: sales@preformed.asia
www.plp.com/th

PLP China

No. 1 Guohuai Jie Development Zone
Liangxiang, Beijing 102488
China PRC
Ph: +86 10 8936 0860
Fax: +86 10 8936 0866
Email: plp@plp.com.cn
www.plp.com.cn

PLP Malaysia

No. 3, Jalan BK 1/11
Kinrara Industrial Park
Bandar Kinrara
47100 Puchong
Selangor Darul Ehsan
Malaysia
Ph: +60 3 807 65922
Fax: +60 3 807 64922
Email: my.sales@preformed.asia
www.preformed.asia/Malaysia

PLP Indonesia

Jl. Irian VII Blok MM-4-2
Kawasan Industri MM2100
Cikarang - Bekasi 17520
Jawa Barat
Indonesia
Ph: +62 21 8593 3899
Fax: +62 21 893 4964
Email: id.sales@preformed.com
www.preformed.asia/Indonesia

PLP Thailand

296 Moo 4, Ladkrabang
Industrial Estate, EPZ 3
Chalongkrung Road, Lamplatew
Ladkrabang, Bangkok 10520
Thailand
Ph: +66 2 739 4026
Fax: +66 2 326 0564
Email: sales@preformed.asia
www.plp.com/th

