

# FIBERLIGN® Organizers

## For Fusion Splices (Protected and Unprotected) and Mechanical Splices

FIBERLIGN Fiber Optic Organizers are designed to help organize, secure, support and protect delicate optical fibers before, during and after splicing. There are splice tray organizers to fit all of PLP's Splice Cases ranging from the 4.0" x 25.8" (102 x 655 mm) to the 9.5" x 38.4" (241 x 975 mm).

The FIBERLIGN Fiber Optic Organizers consist of a mainframe assembly, into which are inserted splice trays, each consisting of a splice tray and a snap-on clear cover. A grooved splice block on the tray holds and cushions the splices.

The splice trays are designed to accept most types of single, mass mechanical or mass fusion splices.

### Features:

- An all-dielectric method to organize, secure, store and protect delicate optic fibers
- Individual trays can be removed to facilitate splicing
- Large excess buffer storage area
- Substantial cost savings

Use the selection chart below to choose the Splice Case and splice tray organizer which meet the requirements for your application.

Splice Case Dimensions (mm)	4.0" x 25.8" (102 x 655)	6.5" x 22.0" (165 x 559)	6.5" x 28.4" (165 x 721)	6.5" x 28.4" (165 x 721) or 8.0" x 28.4" (203 x 721)	6.5" x 28.4" (165 x 721) or 8.0" x 28.4" (203 x 721)	6.5" x 38.4" (165 x 965) or 8.0" x 38.4" (203 x 965)	9.5" x 28.4" (241 x 721) or 12.5" x 28.4" (318 x 721)	9.5" x 38.4" (241 x 965) or 12.5" x 38.4" (318 x 965)
Splice Tray Capacity	3	6	8	6	8	8	16	16
Organizer Capacity = Splice Tray Capacity x Number of Splices/Tray	36	72	96 (144)*	72 (108)*	96 (144)*	192	192 (288)*	384
Organizer Tray Arrangement	8000193 Horizontal	8001072 Vertical	8000185 Horizontal	8001025 Vertical	8001059 Vertical	8001036 Vertical	8001043 Vertical	8001049 Vertical

\*Maximum splice capacity for 18 count splice trays or mass fusion trays.

FIBERLIGN Splice Trays come in various sizes and types to accommodate all of the different PLP Splice Cases and splicing applications being used. The storage trays provide ample room for storing fiber and allow for a generous bend radius designed to assure long term optical performance. There are now two types of trays offered. The standard thermal-formed tray is available for all closures and splice applications. The ADOBE™ Splice Tray is available as a

lower cost alternative and is interchangeable with many of the thermal-formed trays. Both versions come with a clear snap on cover, felt tape for protecting buffer tubes, and tie wraps to secure the buffer tubes to the tray.

**The following pages describe the specific splice trays for the mainframe and closure you have selected.**



# FIBERLIGN® Organizers

**Catalog #8000193**



Horizontal organizer for 4.0" x 25.8" (102 x 655 mm) Splice Case. Accommodates up to three splice trays.

**Catalog #8001072**



Vertical organizer for 6.5" x 22.0" (165 x 559 mm) Splice Case. Accommodates up to six splice trays.

Catalog Number	Splice Type for:	No. of Splice Trays	Splice Tray Capacity	
8000192	Protected Fusion Amp Optimate Norland	3	12	S
8000182	Unprotected Fusion	3	12	S
8001050	3M Fibrolok Amp FingerSplice Siecor CamSplice Northern Telecom Lightbridge	3	12	S
-	Protected Mass Fusion Splice	-	-	-
-	3M Mass Connector	-	-	-
-	Reliance Corelink	-	-	-

Catalog Number	Splice Type for:	No. of Splice Trays	Splice Tray Capacity	
8001071	Protected Fusion Amp Optimate Norland	6	12	S
-	Unprotected Fusion	-	-	-
8001082	3M Fibrolok Amp FingerSplice Siecor CamSplice Northern Telecom Lightbridge	6	12	S
-	Protected Mass Fusion Splice	-	-	-
-	3M Mass Connector	-	-	-
-	Reliance Corelink	-	-	-

(S) signifies a standard size thermal-formed splice tray

# FIBERLIGN® Organizers

Catalog #8000185



Horizontal stacking organizer for 6.5" x 28.4" (165 x 721 mm) Splice Case. Accommodates up to eight splice trays unless otherwise noted.

Catalog #8001025



Vertical organizer for 6.5" x 28.4" (165 x 724 mm) or 8.0" x 28.4" (203 x 721 mm) Splice Case. Accommodates up to six splice trays.

Catalog Number	Splice Type for:	No. of Splice Trays	Splice Tray Capacity	
8000184	Protected Fusion Amp Optimate Norland	8	12	W
8001021		8	12	S
8001044		8	18	S
8001095		8	18	A,W
8001096		8	18	A
8000182	Unprotected Fusion	8	12	S
8001024		8	12	S
8001042	3M Fibrlok Amp FingerSplice Siecor CamSplice Northern Telecom Lightbridge	8	12	W
8001041		8	12	S
8001099		8	12	A,W
8001098		8	12	A
8001085	Protected Mass Fusion Splice	8	48	S
8001091	Reliance Corelink	8	12	S

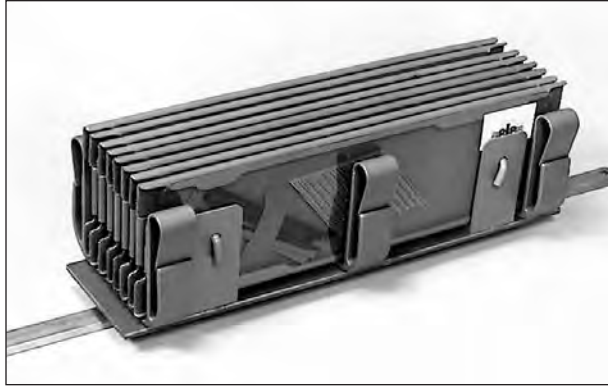
Catalog Number	Splice Type for:	No. of Splice Trays	Splice Tray Capacity	
8001095	Protected Fusion Amp Optimate Norland	6	12	S
8000184		6	12	W
8001095	Unprotected Fusion	6	18	A,W
8000182	3M Fibrlok Amp FingerSplice Siecor CamSplice Northern Telecom Lightbridge	6	12	S
8001042		6	12	W
8001099	Protected Mass Fusion Splice	6	12	A,W
-	3M Mass Connector	-	-	-
-	Reliance Corelink	-	-	-

- (A) Signifies an ADOBE™ Splice Tray
- (S) Signifies a standard size thermal-formed splice tray
- (W) Signifies a wide thermal-formed splice tray, 13" long x 4¾" wide (330 x 121 mm), instead of the standard 13" long x 3¹⁵⁄₁₆" wide (330 x 100 mm)



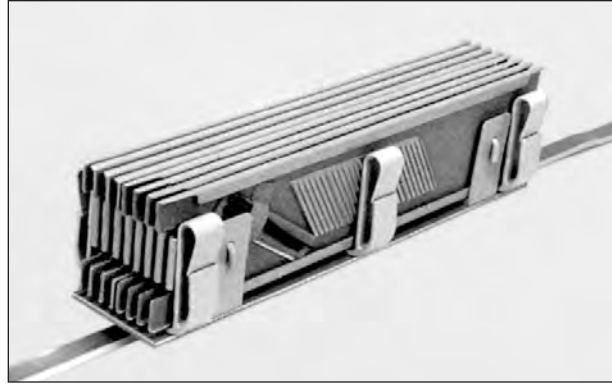
# FIBERLIGN® Organizers

**Catalog #8001059**



Vertical organizer for 6.5" x 28.4" (165 x 727 mm) or 8.0" x 28.4" (203 x 721 mm) Splice Case. Accommodates up to eight splice trays unless otherwise noted.

**Catalog #8001036**



Vertical organizer for 6.5" x 38.4" (165 x 975mm) or 8.0" x 38.4" (203 x 975 mm) Splice Case. Accommodates up to eight splice trays.

Catalog Number	Splice Type for:	No. of Splice Trays	Splice Tray Capacity	
8001021	Protected Fusion Amp Optimate Norland	8	12	S
8001044		8	18	S
8001096		8	18	A
8001109*		8	18	A
8001024	Unprotected Fusion	8	12	S
8001041	3M Fibrok Amp FingerSplice Siecor CamSplice Northern Telecom Lightbridge	8	12	S
8001098		8	12	A
8001085	Protected Mass FusionSplice	8	48	S
8001091	Reliance Corelink	8	12	S

(A) signifies an ADOBE™ Splice Tray.  
 (S) signifies a standard size thermal-formed splice tray.  
 \*ADOBE™ Splice Tray with Felt.

Catalog Number	Splice Type for:	No. of Splice Trays	Splice Tray Capacity	
8001028	Protected Fusion Amp Optimate Norland	8	24	S
-	Unprotected Fusion	-	-	-
8001052	3M Fibrok Amp FingerSplice Siecor CamSplice Northern Telecom Lightbridge	8	24	S
8001026	AT&T Rotary AT&T CSL	8	24	S
-	Protected Mass FusionSplice	-	-	-
-	3M Mass Connector	-	-	-
-	Reliance Corelink	-	-	-

# FIBERLIGN® Organizers

Catalog #8001043



Vertical organizer for 9.5" x 28.4" (241 x 721 mm) Splice Case. Accommodates up to sixteen splice trays unless otherwise noted.

Catalog #8001049



Vertical organizer for 9.5" x 38.4" (241 x 975 mm) Splice Case. Accommodates up to sixteen splice trays.

Catalog Number	Splice Type for:	No. of Splice Trays	Splice Tray Capacity	
8001021	Protected Fusion Amp Optimate Norland	16	12	S
8001044		16	18	S
8001096		16	18	A
8001109*		16	18	A
8001024	Unprotected Fusion	16	12	S
8001041	3M Fiblok Amp FingerSplice Siecor CamSplice Northern Telecom Lightbridge	16	12	S
8001098		16	12	A
8001085	Protected Mass FusionSplice	16	48	S
8001091	Reliance Corelink	16	12	S

Catalog Number	Splice Type for:	No. of Splice Trays	Splice Tray Capacity	
8001028	Protected Fusion Amp Optimate Norland	16	24	S
-	Unprotected Fusion	-	-	-
8001052	3M Fiblok Amp FingerSplice Siecor CamSplice Northern Telecom Lightbridge	16	24	S
8001026	AT&T Rotary AT&T CSL	16	24	S
-	Protected Mass FusionSplice	-	-	-
-	3M Mass Connector	-	-	-
-	Reliance Corelink	-	-	-

(A) signifies an ADOBE™ Splice Tray.

(S) signifies a standard size thermal-formed splice tray.

\*ADOBE™ Splice Tray with Felt.

\*\*If splicing 900 micron tip cable, splice tray will accommodate only 12 splices.