



Aluminium Compression Terminals

PLP Australia can design and manufacture a large range of Compression Terminal Aluminium (CTA) palm configurations to meet your requirements for substation terminations.

The standard range available is compatible with AAC, AAAC and ACSR conductors in sizes from 14.3mm to 33.8mm diameter, using standard AS palm sizes, and bend angles from 0° to 90° in 15° increments.

PLP can also manufacture other configurations and supply large quantities for project orders.

Simple steps to submit your enquiry

A Select the part number

Refer to the CTA Part Number Configurator on the following page.

1. Select the conductor diameter
2. Select the palm bend angle
3. Select the palm configuration

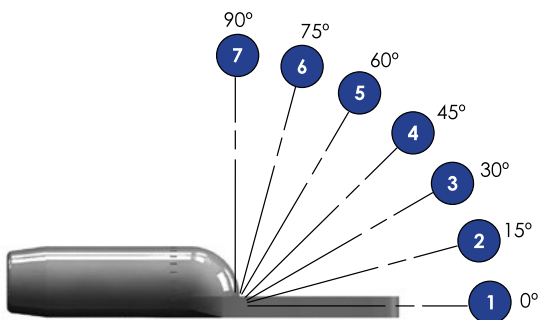
B Submit your enquiry

1. Email enquiries to sales@plp.com
2. For other configurations, please email your specific site requirements to sales@plp.com



Standard CTA palm configurations available include: AS4, AS5, AS7 and AS11.

Standard offset compression palms can be supplied with palm bend-angles between 0 and 90 degrees



AS4	AS5
AS7	AS11



CTA Palm Part Number Configurator

CTA part number combinations

Example: 27mm conductor diameter, 30° bend angle, AS5 palm size, 12mm palm depth, edge bend not available, holes as per standard. Example part number is CTA-270-35111.

C	T	A	-	Conductor Diameter			-	Bend Angle	Palm Size	Palm Depth	Edge Bend	Holes
C	T	A	-				-				1	

Conductor Dia.	Part No.
21.0	210
22.8	228
23.8	238
24.5	245
26.3	263
27.0	270
29.3	293
31.5	315
33.8	338

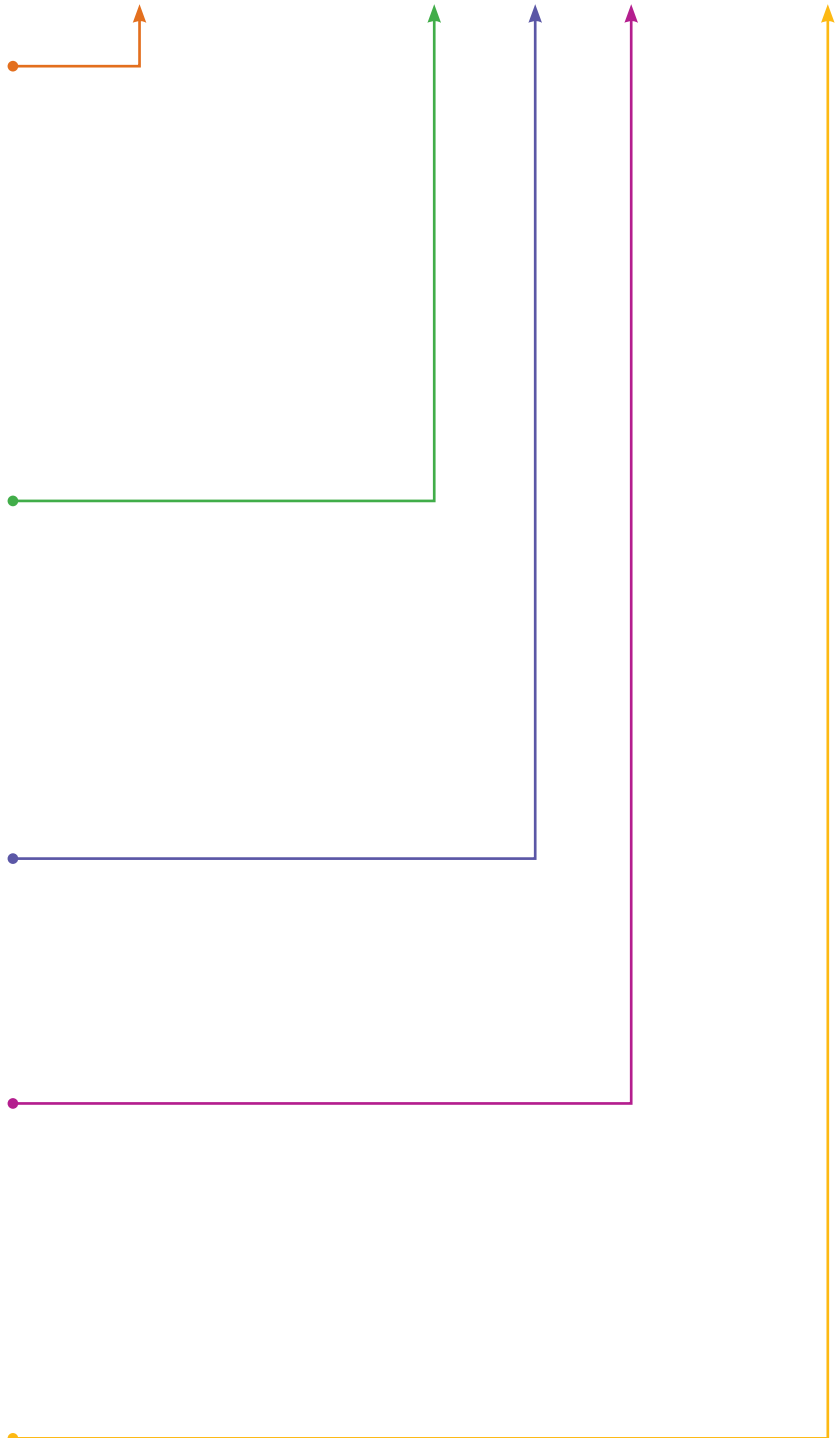
Bend Angle	Part No.
0°	1
15°	2
30°	3
45°	4
60°	5
75°	6
90°	7

Palm Size	Part No.
AS4	1
AS11	2
AS7	3
AS5	5

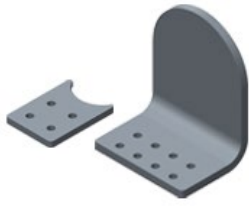
Palm Depth	Part No.
12mm	1
16mm	2
20mm	3

Edge Bend	Part No.
0°	1

Holes	Part No.
None	0
As per AS type	1



PLP Australia Products



Palms and Flags

Palms can be welded to busbars or end caps and current ratings are matched to the rating of the busbars.



Busbar Joint Sleeves

Sleeves for welded connections of aluminium busbar to create continuous sections.



Flexible Connectors

Used to provide flexible, non-rigid connections between busbar sections. Aluminium, copper and tinned Flexible Connectors are available.



Supports for Busbars

Fixed and floating supports for busbar systems.



Spacers

Conductor Spacers are available in a wide range of configurations.

