

ARMOR-GRIP® Suspension

Weight: 0.00kg

Dimensions: 0.00cm x 0.00cm x 0.00cm

Description

ARMOR-GRIP Suspension is designed to reduce the static and dynamic stresses at the support point, so that the conductor or strand is protected against the effects of oscillations. It also protects the conductor in the support against impulse and power flash-over. The ARMOR-GRIP Suspension is recommended as being superior to armor – clamp combinations, for protecting conductors from bending stress, compression stress and abrasion.

Features

- AGS housing: Galvanized Steel Stamp for cable diameter range .272"-.500" or High-Strength Aluminum Alloy Casting for conductor diameter range .482"-2.233".
- An elastomer insert is specifically formulated for resistance to ozone attack, weather, extreme high and low temperature variations, and compression set.
- Rod has a Ball End for non-EHV applications.
- Available PARROT-BILL rod ends for Extra High Voltage (EHV), 345 KV and above
- Standard version is designed for up to 200°C continuous temperature.
- High temperature version (HT) can withstand a continuous conductor temperature of 250°C.
- For repair of fatigue-damaged conductors, a specially designed ARMOR-GRIP Suspension can be applied over PREFORMED Armor Rods to extend the life of the conductor.

Documentation

Application Procedures

[SP-2062 \(ARMOR-GRIP Suspension\)](#)

Catalog Pages

[ARMOR-GRIP Suspension - Catalog](#)

Part Tables

Catalog Number	Diameter Range (Inches)		Nominal Conductor Size	AGS® Rods				AGS Hardware Sets Per Carton	AGS Rods & Hardware Wt./Lbs. Per Carton	Color Code
	Min.	Max.		Length (Inches)	Rod Diameter (Inches)	Rods Per Set	Sets Per Carton			
AGS-5156	.304	.315	#4, 3/4AWAC	26	.102	10	24	24	55	Brown
AGS-5157	.316	.327	#2, 6/1	26	.102	11	24	24	56	Red
AGS-5158	.328	.342	#4, 2/5AWAC	26	.102	11	24	24	57	Orange
AGS-5159	.343	.355	#3, 3/4AWAC	26	.102	11	24	24	58	Black
AGS-5160	.356	.374	#1, 5/2AWAC	26	.102	12	24	24	59	Green
AGS-5161	.375	.389	#3, 2/5AWAC	26	.102	12	24	24	59	Purple
AGS-5162	.390	.404	1/0, 6/1	36	.128	11	24	24	79	Yellow
AGS-5163	.405	.418	1/0, 5/2AWAC	36	.128	11	24	24	79	Brown
AGS-5164	.419	.434	#1, 3/4AWAC	36	.128	11	24	24	79	Green
AGS-5165	.435	.450	2/0, 6/1	36	.128	11	24	24	79	Blue
AGS-5166	.451	.470	2/0, 5/2AWAC	36	.128	12	24	24	83	White
AGS-5167	.471	.481	110.8, 12/7	36	.128	12	24	24	83	Green
AGS-5155	.482	.499	#1, 2/5AWAC	40	.167	10	18	18	44	Red
AGS-5100	.500	.512	3/0, 6/1	40	.167	10	18	18	44	Blue
AGS-5101	.513	.530	4/0, 7W All-Alum.	41	.167	11	18	18	47	Green
AGS-5102	.531	.542	159, 12/7AWAC	41	.167	11	18	18	47	Yellow
AGS-5103	.543	.555	2/0, 3/4AWAC	44	.182	10	18	18	53	Black
AGS-5104	.556	.573	4/0, 6/1	44	.182	11	18	18	55	White
AGS-5105	.574	.594	266.8, 7-19W All-Aulm.	45	.182	11	18	18	56	Brown
AGS-5106	.595	.606	266.8, 18/1AWAC	46	.182	11	18	18	53	Orange
AGS-5107	.607	.619	266.8, 18/1	46	.182	11	18	18	56	Purple
AGS-5108	.620	.645	266.8, 26/7	50	.182	12	18	18	61	Red
AGS-5109	.646	.673	336.4, 17-37W All-Alum.	54	.204	11	15	15	60	Blue
AGS-5110	.674	.690	300, 26/7	54	.204	11	15	15	61	Green
AGS-5111	.691	.710	300, 30/7	54	.204	12	15	15	64	Yellow
AGS-5112	.711	.731	336.4, 26/7	55	.204	12	15	15	65	Black
AGS-5113	.732	.750	336.4, 30/7	56	.204	12	15	15	66	White
AGS-5114	.751	.768	397.5, 26/7AWAC	60	.250	10	12	12	68	Brown
AGS-5115	.769	.795	397.5, 26/7	60	.250	11	12	12	68	Orange
AGS-5116	.796	.824	477, 18/1	61	.250	11	12	12	73	Purple
AGS-5117	.825	.845	477, 26/7AWAC	64	.250	11	12	12	76	Red
AGS-5118	.846	.870	477, 26/7	64	.250	11	12	12	76	Blue
AGS-5119	.871	.893	600, 37W All-Alum.	65	.250	12	12	12	81	Green
AGS-5120	.894	.907	500, 30/7	65	.250	12	12	12	82	Green
AGS-5121	.908	.920	556.5, 24/7	66	.250	12	12	9	81	Yellow
AGS-5122	.921	.937	556.5, 26/7	66	.250	12	9	9	81	Black
AGS-5123	.938	.962	605, 24/7	67	.250	12	9	9	81	White

Catalog Number	Diameter Range (Inches)		Nominal Conductor Size	AGS® Rods				AGS Hardware Sets Per Carton	AGS Rods & Hardware Wt./Lbs. Per Carton	Color Code
	Min.	Max.		Length (Inches)	Rod Diameter (Inches)	Rods Per Set	Sets Per Carton			
AGS-5124	.963	.986	636, 24/7	68	.250	13	9	9	87	Brown
AGS-5125	.987	1.005	636, 26/7	69	.250	13	9	9	87	Orange
AGS-5126	1.006	1.022	636, 30/19	80	.310	11	6	6	73	Purple
AGS-5127	1.023	1.040	795, 37-61W All-Alum.	82	.310	11	6	6	75	Red
AGS-5128	1.041	1.074	715.5, 26/7	82	.310	11	6	6	75	Blue
AGS-5129	1.075	1.090	874.5, 37W	82	.310	12	6	6	78	Green
AGS-5130	1.091	1.118	795, 26/7	82	.310	12	6	6	78	Yellow
AGS-5131	1.119	1.136	954, 37W All-Alum.	82	.310	12	6	6	78	Black
AGS-5132	1.137	1.152	795, 30/19	82	.310	12	6	6	78	White
AGS-5133	1.153	1.175	954, 45/7	82	.310	12	6	6	79	Brown
AGS-5134	1.176	1.208	954, 54/7	82	.310	12	6	6	79	Orange
AGS-5135	1.209	1.226	1113, 61W	88	.365	11	3	3	55	Purple
AGS-5136	1.227	1.259	1192.5, 61W All-Alum.	88	.365	11	3	3	55	Red
AGS-5137	1.260	1.286	1113, 48/7	88	.365	12	3	3	58	Blue
AGS-5138	1.287	1.314	1272, 61W	88	.365	12	3	3	58	Green
AGS-5139	1.315	1.355	1272, 45/7	88	.365	12	3	3	58	Yellow
AGS-5140	1.356	1.394	1272, 54/19	88	.365	12	3	3	60	Black
AGS-5141	1.395	1.416	1351.5, 54/19 AWAC	88	.365	13	3	3	61	White
AGS-5142	1.417	1.442	1510.5, 61W	88	.365	13	3	3	62	Brown
AGS-5143	1.443	1.477	1431, 54/19	88	.365	13	3	3	64	Orange
AGS-5144	1.478	1.516	1590, 45/7	88	.365	13	3	3	64	Purple
AGS-5145	1.517	1.557	1590, 54/19	88	.365	13	3	3	64	Red
AGS-5146	1.558	1.579	1780, 72/7	100	.365	14	3	3	78	Blue
AGS-5147	1.580	1.612	1780, 84/19	100	.365	14	3	3	78	Green
AGS-5148	1.613	1.650	2000, 91W	100	.365	14	3	3	79	Yellow
AGS-5149	1.651	1.688	2000, 72/7	100	.365	15	3	3	83	Black
AGS-5150	1.689	1.711	2000, 84/19	100	.365	15	3	3	83	White
AGS-5151	1.712	1.752	2129, 84/19	100	.365	15	3	3	83	Brown
AGS-5152	1.753	1.790	2156, 84/19	100	.365	15	3	3	83	Orange
AGS-5153	1.791	1.828	2300, 84/19	100	.365	15	3	3	83	Purple
AGS-5168	1.829	1.882	2515MCM76/19	100	.365	16	3	3	85	Red
AGS-5177	2.193	2.233		100	.365	18	3	3	88	Red

Note: Add HT to catalog number for High Temperature Version (Ex.: AGS-5177HT).

Extra High Voltage (EHV) version - 345KV and above

Catalog Number	Diameter Range (Inches)		Nominal Conductor Size	AGS® Rods				AGS Hardware Sets Per Carton	AGS Rods & Hardware Wt./Lbs. Per Carton	Color Code
	Min.	Max.		Length (Inches)	Rod Diameter (Inches)	Rods Per Set	Sets Per Carton			
AGS-5500	.908	.920	556.5, 24/7	66	.250	12	12	9	81	Yellow
AGS-5501	.921	.937	556.5, 26/7	66	.250	12	9	9	81	Black
AGS-5502	.938	.962	605, 24/7	67	.250	12	9	9	81	White
AGS-5503	.963	.986	636, 24/7	68	.250	13	9	9	87	Brown
AGS-5504	.987	1.005	636, 26/7	69	.250	13	9	9	87	Orange
AGS-5505	1.006	1.022	636, 30/19	80	.310	11	6	6	73	Purple
AGS-5506	1.023	1.040	795, 37-61W All-Alum.	82	.310	11	6	6	75	Red
AGS-5507	1.041	1.074	715.5, 26/7	82	.310	11	6	6	75	Blue
AGS-5508	1.075	1.090	874.5, 37W	82	.310	12	6	6	78	Green
AGS-5509	1.091	1.118	795, 26/7	82	.310	12	6	6	78	Yellow
AGS-5510	1.119	1.136	954, 37W All-Alum.	82	.310	12	6	6	78	Black
AGS-5511	1.137	1.152	795, 30/19	82	.310	12	6	6	78	White
AGS-5512	1.153	1.175	954, 45/7	82	.310	12	6	6	79	Brown
AGS-5513	1.176	1.208	954, 54/7	82	.310	12	6	6	79	Orange
AGS-5514	1.209	1.226	1113, 61W	88	.365	11	3	3	55	Purple
AGS-5515	1.227	1.259	1192.5, 61W All-Alum.	88	.365	11	3	3	55	Red
AGS-5516	1.260	1.286	1113, 48/7	88	.365	12	3	3	58	Blue
AGS-5517	1.287	1.314	1272, 61W	88	.365	12	3	3	58	Green
AGS-5518	1.315	1.355	1272, 45/7	88	.365	12	3	3	58	Yellow
AGS-5519	1.356	1.394	1272, 54/19	88	.365	12	3	3	60	Black
AGS-5520	1.395	1.416	1351.5, 54/19 AWAC	88	.365	13	3	3	61	White
AGS-5521	1.417	1.442	1510.5, 61W	88	.365	13	3	3	62	Brown
AGS-5522	1.443	1.477	1431, 54/19	88	.365	13	3	3	64	Orange
AGS-5523	1.478	1.516	1590, 45/7	88	.365	13	3	3	64	Purple
AGS-5524	1.517	1.557	1590, 54/19	88	.365	13	3	3	64	Red
AGS-5525	1.558	1.579	1780, 72/7	100	.365	14	3	3	78	Blue
AGS-5526	1.580	1.612	1780, 84/19	100	.365	14	3	3	78	Green
AGS-5527	1.613	1.650	2000, 91W	100	.365	14	3	3	79	Yellow
AGS-5528	1.651	1.688	2000, 72/7	100	.365	15	3	3	83	Black
AGS-5529	1.689	1.711	2000, 84/19	100	.365	15	3	3	83	White
AGS-5530	1.712	1.752	2129, 84/19	100	.365	15	3	3	83	Brown
AGS-5531	1.753	1.790	2156, 84/19	100	.365	15	3	3	83	Orange
AGS-5532	1.791	1.828	2300, 84/19	100	.365	15	3	3	83	Purple

Note: Add HT to catalog number for High Temperature Version (Ex.: AGS-5532HT).

For use on: Galvanized Steel Strand

Catalog Number	Strand Size	Diameter Range (Inches)		AGS® Rods				AGS Hardware Sets Per Carton	AGS Rods & Hardware Wt./Lbs. Per Carton	Color Code
		Min.	Max.	Length (Inches)	Rod Diameter (Inches)	Rods Per Set	Sets Per Carton			
AGS-7097 AGS-7797	9/32", 7W	.272	.283	26(S) 38(D)	.119	8	24 24	24 24(3)	63 113	Blue
AGS-7098 AGS-7798	-	.284	.294	26(S) 38(D)	.119	9	24 24	24 24(3)	63 113	Red
AGS-7099 AGS-7799	-	.295	.303	26(S) 38(D)	.119	9	24 24	24 24(3)	63 113	Brown
AGS-7100 AGS-7800	5/16", 7W EHS	.304	.315	26(S) 38(D)	.119	9	24 24	24(3)	63 113	Black
AGS-7101 AGS-7801	5/16", 7W Utility	.316	.327	26(S) 38(D)	.119	9	24 24	24(3)	63 113	Green
AGS-7102 AGS-7802	-	.328	.342	26(S) 38(D)	.119	10	24 24	24(3)	66 118	Purple
AGS-7103 AGS-7803		.343	.355	26(S) 38(D)	.119	10	24 24	24(3)	66 118	Brown
AGS-7104 AGS-7804	3/8", 7W EHS	.356	.374	26(S) 38(D)	.119	10	24 24	24(3)	66 119	Orange
AGS-7105 AGS-7805	-	.375	.389	26(S) 38(D)	.119	10	24 24	24(3)	66 119	Blue
AGS-7106 AGS-7806	-	.390	.404	36(S) 48(D)	.138	10	24 24	24(3)	88 148	Red
AGS-7107 AGS-7807	-	.405	.418	36(S) 48(D)	.138	10	24 24	24(3)	88 148	Brown
AGS-7108 AGS-7808	-	.419	.434	36(S) 48(D)	.138	11	24 24	24(3)	92 154	Black
AGS-7109 AGS-7809	7/16", 7W EHS	.435	.450	36(S) 48(D)	.138	11	24 24	24(3)	92 154	Green
AGS-7110 AGS-7810	-	.451	.470	36(S) 48(D)	.138	11	24 24	24(3)	94 156	Purple
AGS-7111 AGS-7811	-	.471	.481	36(S) 48(D)	.138	11	24 24	24(3)	94 156	Brown
AGS-7112 AGS-7812	1/2", 7W-19W	.482	.500	45(S) 57(D)	.138	12	24 24	24(3)	103 160	Blue

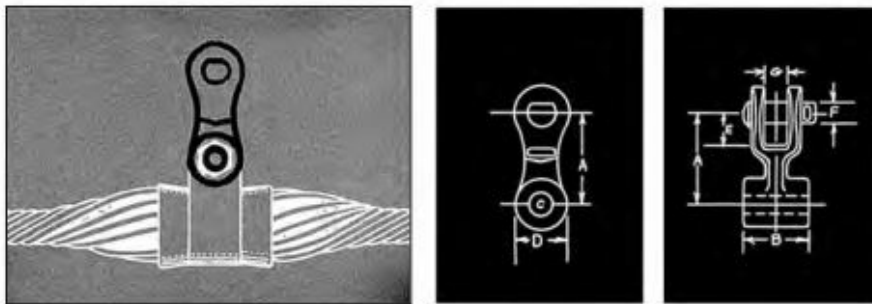
For use on: Aluminum Clad Steel

Catalog Number	Strand Size	Diameter Range (Inches)		AGS® Rods				AGS Hardware Sets Per Carton	AGS Rods & Hardware Wt./Lbs. Per Carton	Color Code
		Min.	Max.	Length (Inches)	Rod Diameter (Inches)	Rods Per Set	Sets Per Carton			
AGS-8097 AGS-8797	3 #8, 8M 9/32", 7W	.272	.283	26(S) 38(D)	.114	9	24 24	24 24(3)	57 106	Blue
AGS-8098 AGS-8798	-	.284	.294	26(S) 38(D)	.114	9	24 24	24 24(3)	57 106	Red
AGS-8099 AGS-8799	-	.295	.303	26(S) 38(D)	.114	9	24 24	24 24(3)	57 106	Black
AGS-8100 AGS-8800	3 #7, 7 #10 10M	.304	.315	26(S) 38(D)	.114	9	24 24	24 24(3)	57 106	Brown
AGS-8101 AGS-8801	5/16", 3W, 7W	.316	.327	26(S) 38(D)	.114	10	24 24	24 24(3)	59 108	Purple
AGS-8102 AGS-8802	-	.328	.342	26(S) 38(D)	.114	10	24 24	24 24(3)	60 110	Green
AGS-8103 AGS-8803	3 #6, 7 #9 12.5M	.343	.355	26(S) 38(D)	.114	10	24 24	24 24(3)	60 110	Black
AGS-8104 AGS-8804	14M 3/8"	.356	.374	26(S) 38(D)	.114	10	24 24	24 24(3)	60 111	Brown
AGS-8105 AGS-8805	7 #8, 16M	.375	.389	26(S) 38(D)	.114	11	24 24	24 24(3)	62 113	Red
AGS-8106 AGS-8806	3 #5	.390	.404	36(S) 48(D)	.144	10	24 24	24 24(3)	84 142	Blue
AGS-8107 AGS-8807	18M	.405	.418	36(S) 48(D)	.144	10	24 24	24 24(3)	84 142	Orange
AGS-8108 AGS-8808	7 #7	.419	.434	36(S) 48(D)	.144	10	24 24	24 24(3)	84 142	Brown
AGS-8109 AGS-8809	20M	.435	.450	36(S) 48(D)	.144	10	24 24	24 24(3)	84 142	Purple
AGS-8110 AGS-8810	-	.451	.470	36(S) 48(D)	.144	11	24 24	24 24(3)	89 150	Green
AGS-8111 AGS-8811	-	.471	.481	36(S) 48(D)	.144	11	24 24	24 24(3)	89 150	Black
AGS-8112 AGS-8812	7 #6	.482	.500	45(S) 57(D)	.144	11	24 24	24 24(3)	95 149	Blue

Accessories

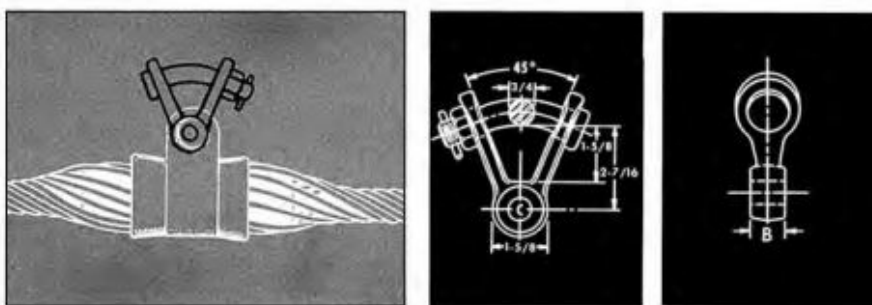
FITTINGS

AGS CLEVIS EYE*



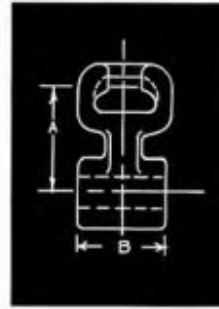
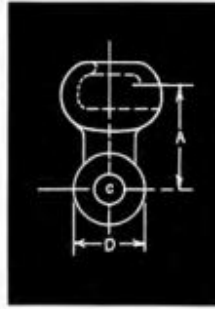
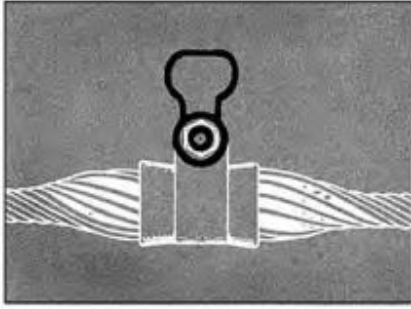
Catalog Number	Conductor Dia. Range (Inches)		General Dimensions							Vertical Ultimate Strength (Pounds)	Wt. Per 100 Units (Pounds)
	Min.	Max.	A In.	B In.	C In.	D In.	E In.	F In.	G In.		
CE-5259	.272	.750	3-1/8	1/2	11/16	1-1/2	1-1/2	5/8	13/16	15,000	104
CE-5261	.751	1.005	3-1/8	3/4	11/16	1-1/2	1-1/2	5/8	13/16	20,000	104
CE-5105	1.006	1.557	3-1/8	1-1/16	13/16	1-1/2	1-1/2	5/8	13/16	25,000	178
CE-5106	1.558	2.233	3-1/8	2-1/8	13/16	1-1/2	1-1/2	5/8	13/16	25,000	178

AGS Y CLEVIS EYE*



Catalog Number	Conductor Dia. Range (Inches)		General Dimensions		Vertical Ultimate Strength (Pounds)
	Min.	Max.	B In.	C In.	
YC-5206	.272	.750	5/8	11/16	15,000
YC-5207	.751	1.005	3/4	11/16	20,000
YC-5209	1.006	1.557	1-1/16	13/16	25,000
YC-5211	1.558	2.233	2-1/8	13/16	25,000

AGS SOCKET EYE*



Catalog Number	Conductor Dia. Range		General Dimensions				Vertical Ultimate Strength (Pounds)	Wt. Per 100 Units Pounds
	Min	Max	A In	B In	C In	D In		
SE-5150	.272	.750	2-5/16	1/2	11/16	1-1/2	15,000	165
SE-5152	.751	1.005	2-5/16	3/4	11/16	1-1/2	25,000	165
SE-5154	1.006	1.557	2-5/16	1-1/16	13/16	1-1/2	25,000	178
SE-5155	1.558	2.233	2-5/16	2-1/8	13/16	1-1/2	30,000	178

EXPLANATORY NOTE:

*When ordered, AGS® FITTINGS will be packed separately from the standard ARMOR-GRIP® Suspension.